

Human CDCP1 Protein

Cat. No. CDC-HM101



Description

Source	Recombinant Human CDCP1 Protein is expressed from HEK293 with His tag at the C-Terminus. It contains Phe30-Leu666.
Accession	Q9H5V8-1
Molecular Weight	The protein has a predicted MW of 72.8 kDa. Due to glycosylation, the protein migrates to 80-100 kDa based on Bis-Tris PAGE result.
Endotoxin	Less than 1EU per μg by the LAL method.
Purity	> 95% as determined by Bis-Tris PAGE > 95% as determined by HPLC

Formulation and Storage

Formulation	Lyophilized from 0.22 μm filtered solution in PBS (pH 7.4). Normally 8% trehalose is added as protectant before lyophilization.
Reconstitution	Centrifuge the tube before opening. Reconstituting to a concentration more than 100 $\mu\text{g/ml}$ is recommended. Dissolve the lyophilized protein in distilled water.
Storage	-20 to -80°C for 24 months as supplied from date of receipt. -80°C for 3 months after reconstitution. Recommend to aliquot the protein into smaller quantities for optimal storage. Please minimize freeze-thaw cycles.

Background

Tumor metastasis depends on the dynamic regulation of cell adhesion through $\beta 1$ -integrin. The Cub-Domain Containing Protein-1, CDCP1, is a transmembrane glycoprotein which regulates cell adhesion. Overexpression and loss of CDCP1 have been observed in the same cancer types to promote metastatic progression.

Assay Data

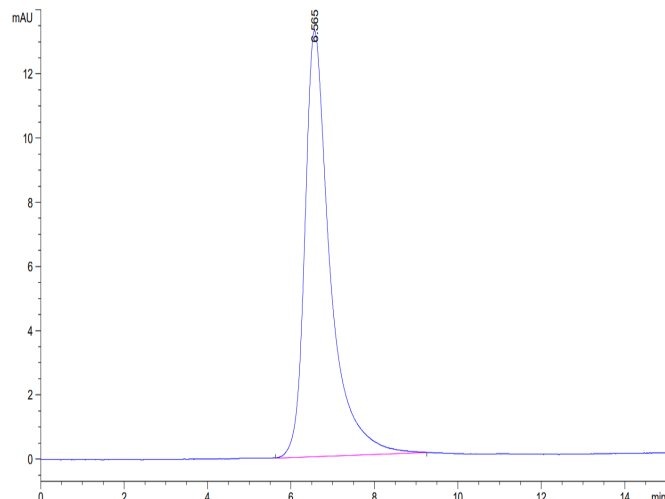
Bis-Tris PAGE



Human CDCP1 on Bis-Tris PAGE under reduced condition. The purity is greater than 95%.

SEC-HPLC

Assay Data

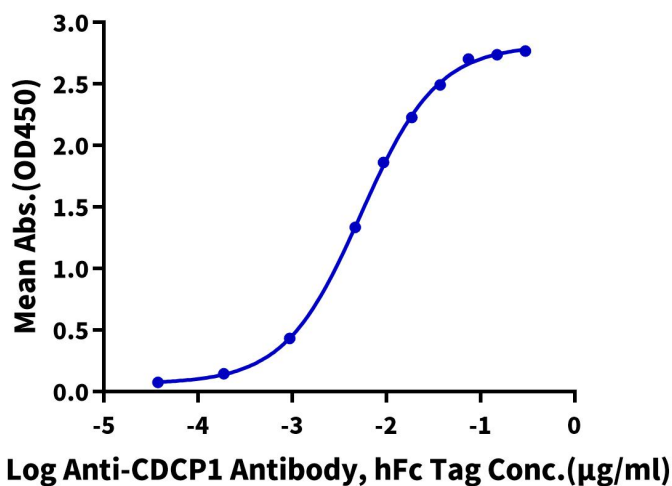


The purity of Human CDCP1 is greater than 95% as determined by SEC-HPLC.

ELISA Data

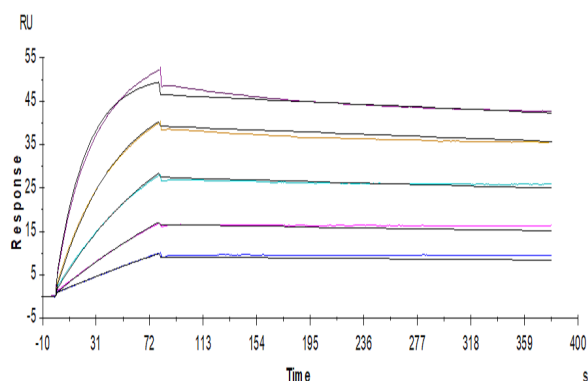
Human CDCP1, His Tag ELISA

0.2µg Human CDCP1, His Tag Per Well



Immobilized Human CDCP1 at 2µg/ml (100µl/Well). Dose response curve for Anti-CDCP1 Antibody, hFc Tag with the EC50 of 5.4ng/ml determined by ELISA (QC Test).

SPR Data



Human CDCP1, His Tag captured on CM5 Chip via anti-His antibody can bind Anti-CDCP1 Antibody, hFc Tag with an affinity constant of 0.18nM as determined in SPR assay (Biacore T200).